

# XC-01 智能点料机



# IL-1000 在线点料机

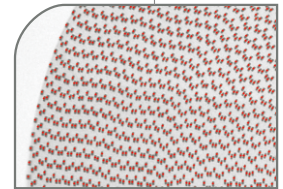
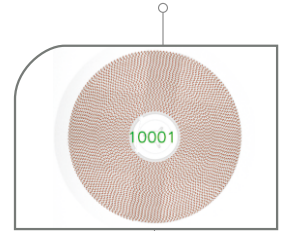
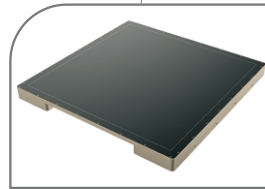
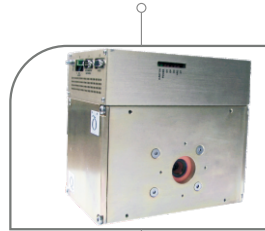


## 设备优势 Our Advantages

- 自主知识产权的人工智能深度学习算法,累积数据到云端数据库共享到所有机器。
- 无需手动扫码, 扫码点料同时进行,取出任一料盘时立即打印对应标签。
- 支持对 MES、ERP、WMS 等系统对接, 数字化管理物料仓库。软件算法永久更新。
- Artificial intelligence deep learning algorithm with independent intellectual property rights, software accumulates data to the cloud database and shares it to all machines.
- No need to scan the code manually, can scan and count at the same time, and then print the corresponding label when user takes out a reel.
- Support MES, ERP, WMS, and other systems, to manage material warehouses digitally. Permanently updated AI deep learning algorithm for free.

- 80KV微焦点光管
- 80KV Microfocus X-ray tube
- 寿命长
- The longest lifetime
- 免维护
- Maintenance-free

- 17英寸超清平板探测器
- 17" super definition FPD
- 微小的像素尺寸
- Micro pixel size
- 寿命长
- Long-life



## 设备参数 Equipment Parameters

X 射线源 X-ray source	类型 Type	封闭式、微焦点 Closed,microfocus	料盘点料 Reel/tray counting	最大尺寸 Max size	17" 英寸(430mm)
	管电压 Max tube voltage	80kV		点料速度 Speed	7-10s
平板探测器 Flat panel detector	有效面积 Effective area	430mm * 430mm	点料精度 Accuracy	01005 ≥ 99.98%, 0201以上 above ≥ 99.99%.	
	像素尺寸 Pixel size	139µm			
	分辨率 Resolution	3072 * 3072			
整机 Equipment	型号 Type	XC-01 (半自动 Semi-auto)		IL-1000 (全自动 Full-auto)	
	尺寸 Dimensions	长 1000mm(L) * 宽 1300mm(W) * 高 1820mm(H)		长 2660mm(L) * 宽 1400mm(W) * 高 1950mm(H)	
	净重 Weight	650Kg		3000Kg	
	电源 Power supply	AC110-220V 50/60HZ			
	最大功率 Max power	1500W		4800W	
	工控电脑 Industrial PC	I7 CPU, 16G RAM, 256GB SSD+4T HDD		I7 CPU, 32G RAM, 256GB SSD+8T HDD	
	显示器 Displayer	24寸 HDMI 显示器 24"HDMI LCD			
其他功能 Other functions	条码自动扫码、标签打印, 管理系统对接 Auto code scanning, Label printing, MES&ERP system connection		料车或AGV自动上下料、自动贴标、自动扫码 Load&unload by cart or AGV, auto scanning & labelling.		